

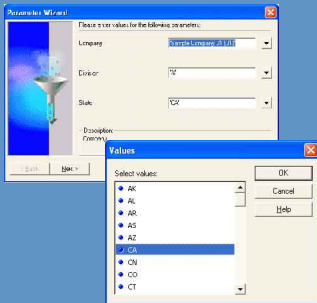


# NASCENT TAX ANALYZER FOR VERTEX

A Reporting Solution That Improves  
Visibility and Access to Tax Information

## FEATURES:

- Multi-ERP capable (Oracle, SAP, Peoplesoft, JD Edwards, etc.)
- Expanded parameters promote "Precision" reporting



- Improve visibility to taxability rules (jurisdictions, customers, products, etc.)

Product	AK	AL	AR	AZ	CA	CO	CT
99-0000-0000							
99-0000-0001							
99-0000-0002							
99-0000-0003							
99-0000-0004							
99-0000-0005							
99-0000-0006							
99-0000-0007							
99-0000-0008							
99-0000-0009							
99-0000-0010							
99-0000-0011							
99-0000-0012							
99-0000-0013							
99-0000-0014							
99-0000-0015							
99-0000-0016							
99-0000-0017							
99-0000-0018							
99-0000-0019							
99-0000-0020							
99-0000-0021							
99-0000-0022							
99-0000-0023							
99-0000-0024							
99-0000-0025							
99-0000-0026							
99-0000-0027							
99-0000-0028							
99-0000-0029							
99-0000-0030							
99-0000-0031							
99-0000-0032							
99-0000-0033							
99-0000-0034							
99-0000-0035							
99-0000-0036							
99-0000-0037							
99-0000-0038							
99-0000-0039							
99-0000-0040							
99-0000-0041							
99-0000-0042							
99-0000-0043							
99-0000-0044							
99-0000-0045							
99-0000-0046							
99-0000-0047							
99-0000-0048							
99-0000-0049							
99-0000-0050							

- Share read-only reports amongst multiple departments (Order Mgmt, Billing, Collections, Customer Service, A/P, Purchasing, etc.)
- Simplify troubleshooting and reconciliation efforts

- Streamline and Reduce Tax Inquiry Resolution Times
  - Gain "Precision" Reporting from Expanded, Ad-hoc Parameters
  - Empower Non-Tax Personnel to Resolve Simple Tax Questions
  - Improve Visibility to Taxability Rules and Settings
  - Simplify Troubleshooting and Reconciliation Efforts

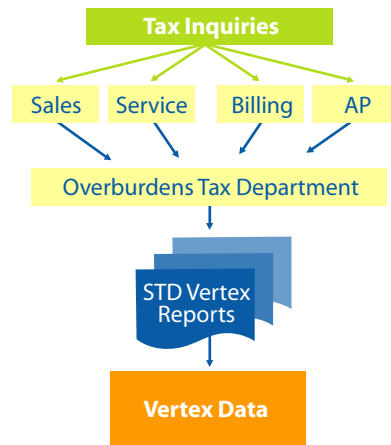
For companies that use Vertex to manage their sales and use tax compliance, visibility to tax-related information is typically limited to personnel within the Tax Department. However, other departments such as Order Management, Billing, Collections, Customer Service, A/P, Procurement, etc. are continually impacted by sales and use tax issues for which they have little to no visibility.

The lack of access to such information inevitably forces non-tax personnel to engage the Tax Department to answer simple tax inquiries, thereby detracting tax personnel from focusing on compliancy, audit defense, or other strategic issues.

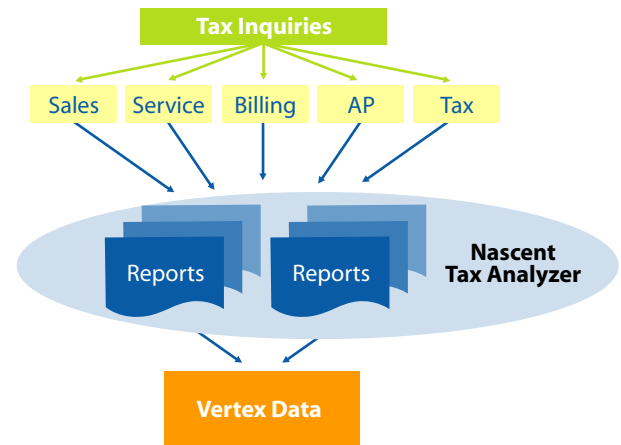
Nascent's Tax Analyzer solution leverages existing investments with ad-hoc reporting tools, translating the Vertex data into meaningful information that can be shared amongst multiple departments. With the Tax Analyzer, personnel from Billing, Collections or Customer Service can address customer inquiries related to:

- Customer Taxability** – Is the customer defined as exempt? For what jurisdiction(s)? For what types of product/services? Has the customer's exemption certificate expired?
- Product Taxability** – Why are some products taxed while others appear exempt? When did the taxability for a specific product/service change?
- Effective Tax Rates** – Was the customer charged the correct rate? Do we have the proper address?

### Without Tax Analyzer



### With Tax Analyzer



Nascent Systems has been an implementation partner of Vertex since 1997, providing our clients with turn-key solutions for automated sales and use tax, returns preparation, and tax reporting. While our Tax Analyzer solution can be used by any ERP system residing on an Oracle database, our roots are based in the implementation and optimization of Oracle's eBusiness Suite of applications.

© 2004 Nascent Systems, Inc. All Rights Reserved.

Nascent Systems, Inc. • Dallas, TX • (p) 972.250.0040 • (f) 972.250.0031 • www.nascent.com

"Aligning Strategy and Technology for Business Optimization"

